

**This is Your Invitation
To the
NORTHEASTERN POULTRY
CONGRESS
42nd Annual POULTRY SHOW**



**The Mallary Complex
Eastern States Exposition Fairgrounds
1305 Memorial Avenue
West Springfield, Massachusetts 01089**

January 17 & 18, 2015

Northeastern Poultry Congress Honor Roll

HONOREE

1973	James Rines, MA Preston Merchant, FL	1990	E. Lea Marsh, CT
1974	Dr. Charles White, Jr. RI	1991	Arthur Traver, NY
1975	Ken Winters, MA	1992	Edward Ritz, MA
1976	George Ward, MA	1995	Eastern States Exposition
1977	John Wabeck, MA	1997	Arthur Shallenburg, NY
1978	Vance Hammond, NH	1998	Ernest C. Durb, MA
1979	John Lightfoot, CT Lincoln Grant, CT	1999	Bill Murray, MA
1980	Alex Duffy, NY	2002	Heather Ware, MA
1981	William Townsend, Jr. MA	2004	Arthur Rochette, CT Forrest Hooper, ME
1982	O. Fayne Whitney, MA	2006	Bruce Laviolette, MA Bonnie Laviolette, MA
1983	Edward Wysock, MA	2007	Bill West, MA
1985	Owen Flynn, MA	2008	Guy Roy, MA
1987	Fred P. Jeffery, MA	2009	Jerry Yeaw Dot Yeaw, RI
		2010	Edith Rochette, CT
		2011	Warren Carlow, RI
		2012	Rick Trojanoski Alison Trojanoski, CT
		2013	Brian Knox, NH
		2014	Don Nelson, RI
		2015	Larry Grimaldi, MA

You are invited to the
NORTHEASTERN POULTRY CONGRESS, INC.
Forty Second Annual Show
At the Mallary Complex-Eastern States Exposition
West Springfield, Massachusetts 01089

-In Honor of-

Larry Grimaldi

-Featuring-

Displays

Large Fowl * Bantams * Waterfowl * Turkeys * Pigeon*The Trio Classic
Junior Exhibitor and Showmanship Competition

NORTHEASTERN POULTRY CONGRESS OFFICERS AND STAFF

President.....Steve Gould
Vice President.....Cheryl Barnaba
Secretary/Treasurer.....Janet Winnett
By-Law Committee Chair.....Bob Kirschner
Judge Selection Committee.....Jerry Yeaw & Brian Knox
Show Secretary..... Cheryl Barnaba
Show Superintendent..... Brian Knox
Junior Show Superintendent.....Joel Henning
Junior Program Coordinators.....Alison & Rick Trojanoski
Awards.....Jackie Koedatich
Chinese Raffle..... Vanessa Koedatich
& Tiffany Mongold
Big E Display Manager.....Guy Roy
Website and Photo Coordinator.....Janet Winnett
Bird Raffles.....Bob Murphy
Sales Area Supervisor.....Wes Sheldon
Vendor Supervisor.....Julie Rountree

-MEMBERS-

**The Congress membership is made up of the people who each
year donate their time and energy to make this the best
winter show in the Northeast.**

-our website-

www.poultrycongress.com

RULES AND REGULATIONS

- There will be six classes: Cock, Hen, Cockerel, Pullet, Young Trio, Old Trio
- Every effort will be taken to accommodate large size geese, turkeys and standard size chickens with suitable cages. If there is a shortage of suitable cages, entries will be accepted on a first come, first serve basis and exhibitors will be notified before the show. Absolutely no double cooping of Bantams, or housing bantams in large fowl cage.
- Junior exhibitors (under the age of 18) may enter in the Open or Junior Division, the appropriate entry fee will apply. Junior exhibitors' entries must have been raised and cared for by the Junior exhibitor. When entered in the Junior Division, the Junior exhibitor must be present during judging, and may be asked to handle his or her birds for the Judge.
- Every care will be exercised to protect exhibits, but the "Congress" will not be responsible for any loss or damage from whatever cause. **Exhibitors are responsible for feeding and watering of their poultry.**
- The "Congress" will place a reasonable amount of bedding in show coops. **Extra bedding must be provided by the exhibitor.** Please remove all water cups and coop cards when cooping out.
- Exhibits will only be handled by the owner, judge, steward or show officials.
- No Poultry will be admitted to the show hall until it has been individually inspected
- All Poultry must be free of visual evidence of the following diseases: infectious bronchitis, coryza, pullorum typhoid, fowl pox, external parasites and laryngotracheitis
- Each entry must be accompanied by written proof (ID Card or test report) that the breeding flock was blood tested negative for pullorum-typhoid within one year prior to entry date. If you do not present your ID card or test report you will be refused entry.
- Birds from quarantined states will not be permitted entry
- No bird vaccinated for laryngotracheitis within 30 days of the show will be admitted
- Any bird showing signs of sickness or endangering other entries will be refused or removed from the show at the discretion of the Superintendents or State Inspector.
- Judging will be governed in accordance with the American Bantam Association's Bantam Standard, or the American Poultry Association's Standard of Perfection as applicable. Judge's decisions will be final.
- The show hall will be open to receive birds on **Friday, January 16, 2015 from 9:00 AM to 8:00 PM. All birds must be in place on Saturday, January 17, 2015 at 9:00 AM.**
- **No birds shall be removed prior to closing time except as designated by the Superintendent. Unauthorized early removal will result in forfeiture of awards.** Poultry not removed from the show hall within one hour after the final award is presented shall become the property of the "Congress".
- All matters not addressed by these rules or those promulgated by the ABA/APA will be at the discretion of the Superintendent, Show Secretaries or Show Coordinator.
- Pursuant to Eastern States Exposition rules and regulations dogs on fairgrounds must be on a leash. For the safety of the poultry and exhibitors, dogs are not permitted in the show hall. **Smoking is prohibited in the show hall. Do not bring food for human consumption into the show hall-support the ESE food vendors.**
- Entry fees will not be refunded for any reason

NEPC JUDGES

**Jeff Halbach, Jackie Koedatich,
Erik Nelsen, Troy LaRoche, & Danny Padgeant**

**AWARDS Open Show
Super Grand Champion of Show**

Arthur Rochette Memorial Award for Champion Bantam

Ernie Durb Memorial Award for Champion Large Fowl

John Lightfoot Memorial Award for Champion Waterfowl

Champion Turkey Award

Awards for the Junior Poultry Show

Super Grand Champion Junior – Award

Champion Junior Large Fowl – Award

Champion Junior Water Fowl – Award

Champion Junior Bantam – Award

All Reserve Champions in these classes will also receive an Award.

**EASTERN STATES EXPOSITION ENDOWMENT
IN MEMORY OF E. LEA MARSH**

Once again the Eastern States Exposition offers an endowment through the Northeastern poultry Congress which is in memory of E. Lea Marsh. Lea was a lawyer by profession who was committed to agriculture and poultry throughout his life. For the many exhibitors who were active in past decades, we are left with the memory of Pioneer Farm White Leghorns in large fowl and bantams. Lea and Pioneer Farm partner Henry Alf exhibited exquisite specimens of their Leghorns. Lea was also a longtime director of the Eastern States Exposition. His endeavors as a director, coupled with his vision for the poultry fancy, were instrumental in bringing together the finest attributes of our organizations. As a result of his lifelong dedication, the Eastern States Exposition is proud to sponsor the many awards and specials offered at our show. In turn, the Northeastern Poultry congress is honored to present a forum which is representative of the goals of E. Lea Marsh.

HOST HOTEL

Sheraton Springfield Monarch Place Hotel

One Monarch Place. Springfield, MA 01144, Phone: (413) 781-1010

The Sheraton is only 1.5 miles from the show hall and has great amenities including indoor pool, pub, and restaurant, as well as covered parking for our group rate of \$99.00 per night.

If you phone in your reservation be sure to mention the Northeastern Poultry Congress to get the group rate.

The cut off date is December 13, 2014

ADDITIONAL LODGING:

There are many additional Hotels and Motels close to the Eastern States Expo Grounds.

These are a Few:

Medallion Motel

13 River St.

West Springfield, MA 413-781-3260

Comfort Inn Suites

106 Capital Dr.

West Springfield, MA 413-736-5000

Days Inn

437 Riverdale ST.

West Springfield, MA 413-785-5365

Knights Inn

1557 Riverdale ST.

West Springfield, MA 41-737-9047

Holiday Inn

711 Dwight St.

Springfield MA 413-781-0900

Hampton Inn

1011 Riverdale ST

West Springfield MA 413-732-1300

FOOD IN THE MALLARY COMPLEX

Our lease agreement states that no food or beverage can be brought into the building by exhibitors or other persons. There is a refreshment stand located within the Mallery Complex that can provide a wide range of snacks and meals. **Please respect our lease Agreement. Thank You!!**

DIRECTIONS TO THE SHOW

From the Mass Pike I 90 exit 4 to Rt. 5 Riverdale St. south, after traveling under a railroad bridge, you will see the sign for the exit to the Big E, Take the ramp to the rotary then the first exit, Memorial Avenue Rt. 147. Follow Memorial Avenue until you find the Eastern States Exposition grounds on your left about a mile from the rotary. Proceed until you find an open gate, The Mallery Complex is on the southeastern side of the grounds with a distinct dome. If you are coming from the north or south on I 91 take the Rt. 5 exit Riverdale St. and follow the directions above.

Problems

If when traveling to the show you are delayed or have a problem and need to contact someone in the congress you can call Friday Night or Saturday 603-660-6587. This number is for exhibitors only, **NO general questions please.** The show hall will be open to accept early entries on Friday January 16th from 9a.m. to 8p.m.

A QUEEN SIZE THANK YOU GOES OUT TO CONGRESS'S TOP VOLUNTEER !!!

When I was young Edith Rochette taught me this phrase: "We are Friends in the Fancy".

Being a kid I thought it was kinda corny. As I grew up I realized the strength of this phrase. What we are doing is more than a hobby. It's a way of living that we enjoy together.

We do it as a group, and we routinely get together for shows.
This means some people have to do more than just breed chickens and drive to the meeting spot.
Some people have to make it happen.

The Queen of making it happen at the Congress has always been **Edith Rochette.**

Edith has been our top volunteer for longer than I can even remember. Through thick and thin she has done the hardest job a chicken club has to offer.

This year marks the first that she's not opening our mail and processing our entries.

Instead of sending her your Congress entries this year; ***be part of our "Crow Out" thanking Edith for her years of service !!***

Send a note of thanks to **Edith Rochette**
PO Box 178
Haddam, CT 06438

JUNIOR SHOWMANSHIP
Rick and Alison Trojanoski Coordinators

Showmanship

The APA-ABA Poultry Youth Club has prepared a study guide that outlines the showmanship procedures. You can obtain a copy from their website.

Showman should be prepared to answer questions relative to production, health, nutrition, and breeding about their bird and poultry in general. Showman should dress neatly, preferably in dark pants and a long sleeved white collared shirt. The most important thing to remember is to handle your bird in a natural and comfortable way for both you and your bird, at the same time allowing the judge to see what they are looking for.

Note: If possible bring a bird for showmanship that is not entered in the show. Judging will not be delayed for birds not cooped at the time of judging.

Showmanship Classes:

Pre-novice: Open to any youth under 9 years old

Novice: Open to any youth who has shown less than 3 times

Junior: Open to youth ages 9 through 11

Intermediate: Open to youth ages 12 through 14

Senior: Open to youth 15 through 18

Judging Contest

Two divisions will be offered: Junior 13 and under and Senior over 13.

Three classes will be available for the youth to judge including Call Ducks

General Knowledge Exam

Again 2 divisions will be offered, Junior 13 and under and Senior over 13. Questions will cover identification, production nutrition, health and breeding.

Have you considered entering a trio this year?

Champion trio \$75.00, 2nd place trio \$50.00, 3rd place, \$25.00. Did you know...

1. A trio consists of ONE MALE, TWO FEMALES – SAME BREED, SAME VARIETY, SAME AGE
2. The females should be identical twins, as close as possible in shape, size, color, and condition.
 - a) NO TRIO WHERE THE FEMALES DON'T MATCH SHALL BE AWARDED FIRST PLACE
 - b) A trio with two fair quality females that match should BEAT a trio with two excellent quality females that don't match!
3. The male should be your best –he counts as half the trio!
4. Only birds from a first place trio can compete for Best of Variety or higher award!
 - a) 1st cock, 1st hen, 1st cockerel 1st pullet, all three birds from the 1st place old trio, and all three birds from the 1st place young trio compete for Best of Variety
5. Trios are judged against trios only (old trio Vs old trios, young trio Vs young trios - in the same variety), they DO NOT compete for placing in the cock, hen, cockerel, pullet judging.
6. If any one bird in a trio is disqualified, ALL three birds in that trio are disqualified!
7. In case of a tie – the trio with the highest scoring (better) male shall win.
8. Check show rules! Some shows coop the two females in the SAME cage, others coop each bird separately. Plan your trios accordingly, if the females are cooped together they should be penned together BEFORE the show – so they don't fight at the show!

***The Northeastern Poultry Congress Trio Classic is one of the Biggest in the Nation!
Plan now to compete in this special competition.
Trios compete for the Trio Classic in the Open show only.***

The Poultry Congress offers some big cash awards to the Top 5 Displays !

Enter at least one Cock, Hen, Cockerel, Pullet and one trio in a variety.
The more birds you enter in your variety the more points you may be able to rack up.
If you're an ABA member you will be pleased to note that Champ and Res Champ Displays are awarded a Star ! Minimum 10 displays competing.

DISPLAY AWARDS

Champion Display.....\$100.00	Reserve Champion Display.....\$75.00	
Third Best.....\$50.00	Fourth Best.....\$35.00	Fifth Best.....\$25.00

DISPLAY CALCULATIONS: The following rules apply: All entries of a display shall be of the same variety and of the same breed. A display shall consist of five or more entries to be made up of not less than one entry in each of cock, hen, cockerel, pullet and trio classes. All display specials are awarded by points. All first places count 6 points, second places count 4 points, third places count 3 points, fourth places count as 2 points, and fifth places count as 1 point. All points count as double when won in a trio class.

-BACK BY POPULAR DEMAND-

Saturday and Sunday Poultry Raffles

The “Congress” will again hold its bird raffles – one on Saturday afternoon at 2p.m. and one early Sunday morning. Exhibitors are welcome to donate a quality pair of birds, but only pairs will be accepted. If you cannot attend the show, send a pair with a friend. Each donated pair will be marked with the donor’s name and the donor whose pair gets the most tickets over the weekend will receive \$25.

Raffle tickets purchased Saturday cannot be used for the Sunday raffle. Proceeds from the raffles enable the “Congress” to upgrade its show coops.

CHINESE RAFFLE

A Chinese raffle will be available to everyone attending; drawings will take place Saturday afternoon at 3p.m.. There are many interesting things to go home with at this raffle! Take advantage of the unique items offered. Donations are welcomed. Contact Tiffany Mongold, or Vanessa Koedatich at the show.

Return of:

The Funky Chicken Class

After a long absence, the Congress is proud to once again offer the non-standard class (AKA: the Funky Chicken Class) at our winter classic show. Each exhibitor may enter one bird into the non-standard class and compete for awards. The non-standard rules are quite simple. Any bird that is representative of an ABA or APA accepted specimen shall be disqualified. Likewise, a blind or physically deformed entry shall be disqualified. Entries will be judged on originality and uniqueness. Pet names, rather than breed or variety, must be used to identify your entry.

Need a suggestion or starting point? Many years ago, Cliff and Phylis Hawkes of Raymond, Maine won Champion Non-Standard with “The Licorice Kid”. While the Hawkes’ raised Golden Sebrights and Black Old English game bantams, they also had one cockerel cross between these two breeds which had the type of a Sebright, but with Black plumage throughout. Hence, the name: The Licorice Kid.

Entries are limited to single birds with only one non-standard bird entered per entry form. An entry can be of any type of poultry exhibited at the Congress. The entry fee is \$4. Open and junior exhibitors will be judged together as one class. Be sure to add your non-standard entry on your entry form. Finally, even if you do not have an entry in this class, be sure to check out the non-standard aisle when at the show!!

EASTERN STATES EXPOSITION
Offers the following cash Awards
In the memory of E. Lea Marsh

LARGE CHICKENS

Champion Large Fowl..... \$75.00 Reserve Large Fowl.....\$35.00
Third Best Large Fowl.....\$25.00

BANTAM CHICKENS

Champion Bantam.....\$75.00 Reserve Champion Bantam.....\$35.00
Third Best Bantam.....\$25.00

WATERFOWL

Champion Waterfowl.....\$75.00 Reserve Champion Waterfowl.....\$35.00
Third Best Waterfowl.....\$25.00

TURKEYS

(If 10 or more are entered)

Champion Turkey.....\$25.00 Reserve Champion Turkey.....\$10.00

PIGEONS

(If 10 or more are entered)

Champion Pigeon.....\$25.00 Reserve Champion Pigeon.....\$10.00

TRIO CLASSIC

Champion Trio.....\$75.00 Reserve Trio.....\$50.00 Third Best Trio.....\$25.00

A rosette for Champion Trio in the following APA classes: Old English Game, Modern Game, SCCL, RCCL, AOCCL, Featherleg, American, Asiatic, English, Continental, Mediterranean, and AOB, and one rosette for Waterfowl Trio.

DISPLAY AWARDS

Champion Display.....\$100.00 Reserve Champion Display.....\$75.00
Third Best.....\$50.00 Fourth Best.....\$35.00 Fifth Best.....\$25.00

BANTAMS, LARGE FOWL, AND WATERFOWL

In the Open Competition, in each of the following classes

SCCL, RCCL, AOCCL, Featherleg, Old English Game, Modern Game, American, Asiatic, Mediterranean, English, Continental, AOB, Heavy Goose, Medium Goose, Light Goose, Heavy Duck, Medium Duck, Light Duck, and Turkey.

CHAMPION.....\$25.00 RESERVE CHAMPION.....\$15.00

Class Champions In the 4-H/Junior Competition, where 10 birds or more are Competing

CHAMPION.....\$25.00 RESERVE.....\$15.00

FANCIERS CHOICE SHOW SPECIALS

We thank these individuals for the following Specials.

Bob Murphy offers:

BV Silver Penciled Rock Standard
\$15.00
RV Silver Penciled Rock Standard
\$10.00
BV Silver Penciled Rock Bantam
\$10.00
RV Silver Penciled Rock Bantam
\$5.00
BV Silver Penciled Wyandotte LF
\$15.00
RV Silver Penciled Wyandotte LF
\$10.00
BV Splash Old English Game Bantam
\$10.00
Best Non-Standard Color Ply Rock Bantam
\$10.00

Russ Crevoiserat offers:

Best Display in Barred Rock Bantams
\$25.00

Robert Hawes Offers:

Best Cochin Bantam - Not Black or White
\$10.00
Best Junior Bantam Cochin
\$5.00

Howard Kogan Offers:

In Honor of Robert Hawes

Best Junior Nankin
\$5.00
Reserve Junior Nankin
\$5.00
Best JR. Rosecomb Nankin
\$5.00
Best JR. Single Comb Nankin
\$5.00

Donna Fenton Offers:

Reserve Junior Australorp
\$20.00

Jerry and Dot Yeaw
William Henry Rd. Scituate, RI 02857



Breeder & Exhibitor

S.C. White Leghorn Bantams
Bearded Mille Fleur d'Uccles

***ENTRIES MUST BE RECEIVED BY
December 29, 2014**

No changes to your entry will be accepted at the show!

*** ENTRY FEES ***

*Singles \$5.00 per bird.... Trios \$14.00 per trio
If you enter 20 or more birds, \$4.00 per bird, \$11.00 per trio*

**Juniors
\$5.00 per bird**

Double Coops available for Large Fowl Only

Poultry Sales Information

The Poultry Congress will be offering 10x10 floor space sales areas for \$75.00.
You must provide your own caging/cooping. Sales areas are for exhibitors only.
Individual sales coops will be available as well.
Please reserve your space on your entry. No floor space will be sold the day of the show.
Sales Coops & Floor Space is available for EXHIBITORS Only

*Please feed and water your sale birds...
The sales area will be monitored for overcrowding and health by the State of MA
inspectors*

-HOW TO ENTER YOUR BIRDS-

ALL LAND FOWL BROUGHT TO THE SHOW MUST HAVE A CURRENT PULLORUM
CERTIFICATE OR BE FROM A FIRST GENERATION FLOCK

ATTACH A COPY OF YOUR CERTIFICATE TO YOUR ENTRY

Failure to do so will cause the state of Mass to refuse your entry

For Your Convenience and Ours

PLEASE INCLUDE A STAMPED, SELF-ADDRESSED ENVELOPE or POSTCARD

WITH YOUR ENTRY-WE WILL RETURN IT TO YOU TO

VERIFY THAT YOUR ENTRY WAS NOT LOST IN THE HOLIDAY MAIL

For The Protection of All the Birds on Exhibit

BIRDS WILL BE EXAMINED FOR DISEASE BY A STATE POULTRY INSPECTOR

Additional information for new exhibitors on our web site poultrycongress.com

MAKE CHECKS PAYABLE TO

NORTHEASTERN POULTRY CONGRESS, INC.

No Entry Accepted Unless Payment Accompanies Entry

Mail to: Cheryl Barnaba, 2305 Foxon Rd. N. Branford, CT 06471

860-559-9929(4p.m.-7p.m....text any time)

AMERICAN BANTAM ASSOCIATION
PO Box 127, Augusta, NJ 07822
Phone/Fax 973-383-8633

Email: Fancybantams@embarqmail.com Website: www.Bantamclub.com

DISTRICT MEET

7 x 9 Engraved Plaques to Champion and Reserve Champion Bantam

\$1 Bantam Buck for Champion and Reserve for all seven bantam divisions providing there are a minimum of 25 birds competing, plus a free listing in the upcoming ABA Yearbook in the section Who's Who in Bantams.

\$1 Bantam Buck for Champion and Reserve Champion in all other classes of 100 or more, plus a listing in the upcoming yearbook in the section Who's Who in Bantams.

*All wins in Classes of 100 or more will be denoted with a star * and be retained in the ABA records to accumulate towards the Master Exhibitor, Master Breeder, and Lifetime Achievement awards.*

Only ABA members are eligible to compete for the above awards.
Dues are \$20.00 per year \$50.00 for three years.

New members receive a copy of the quarterly and the latest available copy of the Annual American Bantam Association Year Book which lists many advertisers and includes a complete breed and variety index. Winners of ABA awards are listed in the year book under Who's Who in Bantams.

Starred wins are earned in classes of 100 or more in the following:

- Champions and Reserve Champions in the seven bantam divisions.
- Best and Reserve of Breed and Variety.
- Best Display when 7 or more bantam displays are shown
- Best and Reserve Display when 10 or more bantam displays are shown.
- Best and Reserve Trio when 30 or more trios are shown by 4 or more exhibitors.

A single bird is eligible for only one award and can earn only one starred win.

*****Awards are subject to change.



American Poultry Association

The APA invites you to become a member. Annual dues are \$20.00 for one (1) year, \$50.00 for three (3) years, \$25.00 for one year outside the U.S. and Canada. Junior dues (for those 18 and under) are \$15.00 per year, or \$40.00 for 3 years. Endowment Trust Life Membership is \$365. All Annual and Endowment Trust Life Members receive our yearbook and are eligible to earn points toward a Master Exhibitor Award. Every member is eligible for the awards at this show.

A minimum of five (5) Master Exhibitor Award points will be awarded to any qualified win at this show.

OPEN SHOW AWARDS

APA ribbons awarded for the following Class Champions:

LARGE CHICKENS

American, Asiatic, English, Mediterranean, Continental, All Other Standard Breeds

BANTAM CHICKENS

Modern Game, Old English Game, Single Comb Clean Legged,
Rose Comb Clean Legged, Feather Legged, All Other Comb Clean Legged
DUCKS: Heavy, Medium, Light, Bantam GEESE: Heavy, Medium, Light
TURKEYS GUINEA FOWL

Special APA Medals for Show Champion and Show Reserve

JUNIOR SHOW AWARDS

An APA ribbon will be awarded for the following Champions shown by junior exhibitors:

Champion Large Chicken * Champion Bantam Chicken
Champion Duck * Champion Goose * Champion Turkey * Champion Guinea Fowl

All judging will be by the latest edition of the American Standard of Perfection, copyrighted by the American Poultry Association, Inc. Application for membership may be made at the show or may be sent to the American Poultry Association, but application must be made prior to the judging to be eligible for the APA awards.

American Poultry Association, Inc.

Pat Horstman, Secretary P.O. Box 306, Burgettstown PA 15021
724-729-3459. secretaryapa@yahoo.com



Contact Michelle
Cell (570) 439 6206
Email michellesepiol@yahoo.com

January 17 & 18, 2015

Nankin Club of America

District 5 Nankin Region Meet Hosted by North Eastern Poultry Congress

West Springfield, MASS., January 17 & 18, 2015– Come out to join us in exhibiting and promoting the lovely Nankin breed. This is one of the largest poultry shows in the North East. It is a two day show held at the Eastern States Expo Center. Beautiful birds, interesting people, great fun...what's not to love?

This event is Open to Single Comb and Rose Comb Varieties; NCA Adult and Junior Members

Rosette for Champ. SC Nankin, 10 or more birds in class, minimum of 3 exhibitors

Rosette for Champ. RC Nankin, 10 or more birds in class, minimum of 3 exhibitors.

Rosette for BEST of BREED, no minimum number of birds or exhibitors.

Rosette for RESERVE of BREED, no minimum number of birds or exhibitors.

Notice: If there are not ten birds of each variety in the show, ONLY the Best and Reserve of Breed Rosettes will be awarded

The NCA mission is to promote this glorious bird through education, membership, exhibition and display. To work on breeding and improving our stock and achieve the Standard of Perfection as set forth in the American Bantam Association's Bantam Standard.

American Silkie Bantam Club District Meet



AMERICAN SILKIE BANTAM CLUB

CERTIFICATE OF ACCOMPLISHMENT is awarded for:

BEST OF BREED AND RESERVE OF BREED

(When requirements are met in Open and Junior shows.)

Meet Awards

Special Meets – Certificates for Best of Breed & Reserve of Breed

District and State Meets – Flat Ribbons for Best of Breed & Reserve of Breed

Both Open and Jr. Meet requirements: 2 Exhibitors and 10 Silkies.

(Note this does not apply to Points)

Yearly Membership: \$10 Juniors - \$15 Adults - \$20 Family - \$20 Members outside USA

Members Receive Quarterly Newsletters and a Yearbook and access to the Member's Community Area of the ASBC Website which includes: access to classifieds, forum, live chats, past newsletters, photo albums and more!



Promoting the Old English Game Fowl



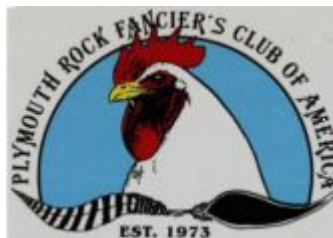
**For Centuries a Symbol of Strength and Courage
The 80th Annual Old English Game Club of America
NATIONAL MEET**

The Old English Game Club of America awards are only given to current members. Fanciers may become members of the Old English Game Club of America upon payment of the annual membership fee of \$10.00. Membership dues to the Old English Game Club of America should be sent to:

Wesley Boutelle, Secretary
201B High Street, Winchendon, Massachusetts, 01475
Phone: 1 978 297 9551 - Email: madisonboutelle@comcast.net

**Plymouth Rock Fanciers Club Of America
2014 NATIONAL MEET**

Send dues before judging to:
Richard Hickman 2724 Cedar. St. Millville NJ 08332 to be eligible for awards.
Dues are \$20.00 for single & \$7.50 for Junior (under 18) per calendar



Rare, Tame, Beautiful
S.C. Nankin Bantams
Delivered to Poultry Congress
(call or email ahead for delivery)

Howard Kogan

Falling Tree Farm

(518)733-6662

Email: Howardjkogan@gmail.com

SALTBOX FARM

Supports

Our Junior Exhibitors

Donna & Laura Fenton

Townsend, MA

Fenton4h@yahoo.com

Black Australorps

Bob Murphy

The Finest Splash Old English Bantams

Standard:

Silver Pencil Plymouth Rock &
Silver Pencil Wyandotte

Bantam:

(Still Working on New Colors:)

Red Pyle, BB Red, Silver Quill,
Golden Pencil and Buff Columbian

Plymouth Rocks

25 Side City Road
Bridgton, Maine 04009

Cell Phone# (508) 641-6172

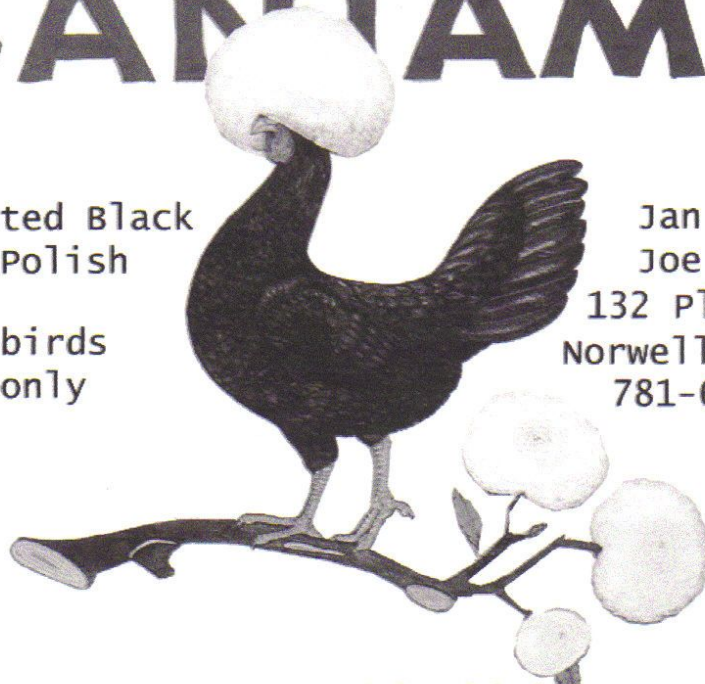
Home# (207) 647-8014

FOLKLORIC BANTAMS

White Crested Black
Bantam Polish

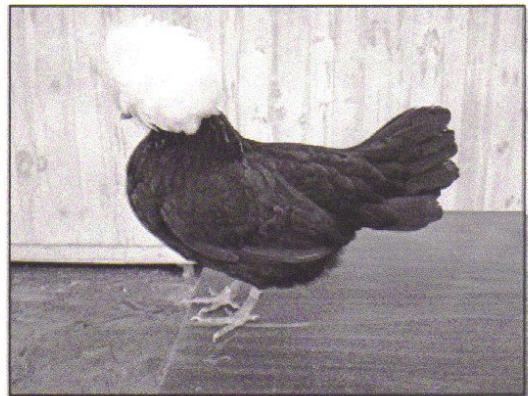
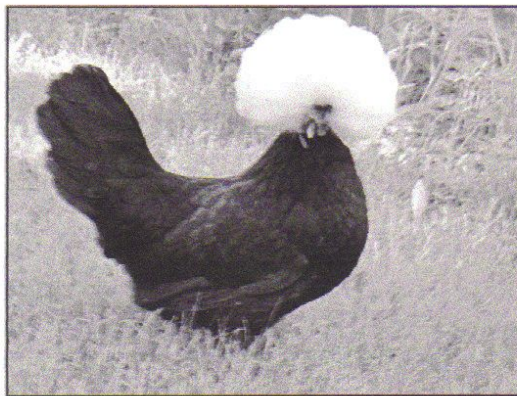
~
Adult birds
pairs only

Jan Brett
Joe Hearne
132 Pleasant St
Norwell, MA 02061
781-659-7748



NORWELL, MA.

janartstudio@janbrett.com



Guy Roy

Breeder of Fine Fowl

Standards and Bantams

780 Bernie Avenue
West Springfield, MA 01089

413-737-7325

*Birds available for sale to the buyers with a
discriminating taste for quality*

.....
Golden Egg Farm

Kate Morreale, Hardwick, MA



Champion Silkies
kate@goldeneggfarm.com

Northeastern Poultry Congress Honor Roll
IN MEMORIAM

- 1973 Paul Ives, CT
- 1974 William Townsend, Sr., MA
- 1975 Walter Cook, MA
- 1976 William Kitner, MA
- 1977 George Ward, MA
- 1978 William Symmington, MA
- 1979 John Wabeck, MA
- 1980 Dusty May, CT
- 1981 Paul Fontaine, MA
Donald Perham, NH
- 1982 James Rines, MA
Charles White, RI
- 1983 JohnKostro, MA
Duncan Nickerson, MA
- 1985 Charles Chase, MA
- 1987 Andrew Park, MA
- 1988 Howard Smith, MA
- 1989 John D. Murphy, MA
- 1990 Henry Alf, NY
- 1991 Rudy Plausse, MA
- 1992 Brad Atwood, CA
- 1993 Leo Castonguay, MA
- 1994 Edward Ritz, MA
- 1995 Arthur & Bertha Traver, NY
- 1996 Maurice Nelson, NH1998 Fred P. Jeffrey, MA
- 1999 Robert W. Leith, NH
- 2000 Art Schallenburg, NY
Bill Wood, MA
- 2001 Dr. Charles Wabeck, MD
- 2002 Edwin Libby, MA & ME
- 2003 Ernest C. Durb, MA
- 2004 Dick Gee, RI
William Townsend, MA
- 2005 Arthur Rochette, CT
Forrest Hooper, ME
George Marvin, ME
Lorna Rhodes, MA
Eleanor Vinhage, FL
- 2006 Ed Serrine, CT
- 2007 Bill Murray, MA
- 2008 O. Fayne Whitney, MA
- 2009 August F. Vinhage, VT
- 2010 Harry "Buzz" Barbour, RI
- 2011 Norman Richamnd, RI
- 2013 George Shopac, RI
Eddy Travers, MA
Brian Ridley, MA
- 2014 William Serrine, CT

Janet Winnett
85 Thomas Street
Middleboro, MA 02346